

Body-Solid
Built for Life

SPR500 COMMERCIAL HALF RACK

FC
FULL
COMMERCIAL
RATED



TECHNICAL SPECIFICATIONS

- The 3" x 3" 11 gauge steel mainframe gives the Body-Solid SPR500 Commercial Half Rack a 1000 lb weight capacity.
- An alternative to traditional power racks, Half Racks are great space savers providing a smaller footprint than most enclosed power racks. The Body-Solid SPR500 is an all-purpose weight training station.
- 1" hole spacing for safety spotter bars means you will always find that perfect stretch without compromising safety.
- Several optional attachments allow you increase function and customize the SPR500 to your specific facility needs, such as the SPR500HALFBACK, a rear extension with four weight horns for easier weight storage and organization.
- 50"L x 53"W x 89"H • 212 Lbs.

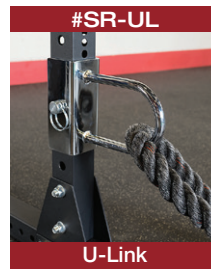
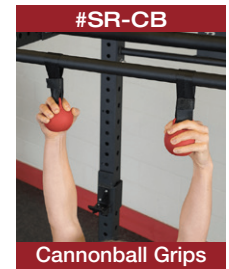
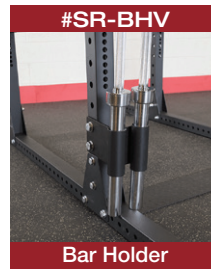
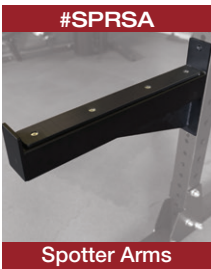


EXPANDABLE TO MEET THE NEEDS OF ANY FACILITY





OPTIONAL ATTACHMENTS



Body-Solid
Built for Life

1900 S. Des Plaines Ave. • Forest Park, IL USA 60130
TF: (800) 833-1227 • PH: (708) 427-3555 • FX: (708) 427-3556
www.bodysolid.com